

# Sustainable Canadian Agricultural Partnership

Competitive. Innovative. Resilient.

---

## Saskatchewan Ministry of Agriculture 2023-28 Programming SSGA 2023 AGM and Convention

# Session Objectives

- ✓ Overview of the Sustainable Canadian Agricultural Partnership (Sustainable CAP), 2023-2028.
- ✓ Highlight programming available to the livestock sector.
- ✓ Questions and answers.



# Sustainable CAP Programs

Programs Available to Farmers and Ranchers	Research Programs	Programs Available to Agri-Businesses or Industry Organizations
Farm and Ranch Water Infrastructure Program (FRWIP)	Ag Demonstration of Practices and Technologies (ADOPT)	Saskatchewan Lean Improvements in Manufacturing Program (SLIM)
Irrigation Program	Agriculture-Applied Research Management (Agri-ARM)	Product Development Program
Resilient Agricultural Landscapes Program (RALP)	Agriculture Development Fund (ADF)	Agriculture Awareness Initiative Program (AAIP)
Livestock Facility Emissions Program	Strategic Field Program	Irrigation Program
Animal Health and Biosecurity Program	Strategic Research Initiative	Pest Biosecurity Program
Pest Biosecurity Program	Strategic Research Program	
Farm Safety Initiatives		
Next Gen Agriculture Mentorship		
Agriculture Student Scholarship		

For full details on these programs and more, visit [saskatchewan.ca/S-CAP](https://saskatchewan.ca/S-CAP).

# Farm and Ranch Water Infrastructure Program (FRWIP)

## Program Purpose:

- Supports development of secure and sustainable water sources for agricultural use to mitigate drought impacts, improve public safety and reduce potential groundwater contamination through well decommissioning.

## Program Enhancements:

- Funding cap is increasing from \$50,000 to \$75,000 per eligible applicant.
- Eligibility has expanded to include development of small dams under 2.5 meters.
- Power infrastructure and hook-up now eligible to a maximum payment of \$20,000.
- Focus on improved delivery and application processing times.



# Resilient Agricultural Landscapes Program

## Land Use BMPs

BMP	Eligible Activities	Cost-share	Funding Cap
<b>Seeding Tame and Native Forage</b>	<p>Seed and establishment costs for tame and native forages.</p> <p>Seed costs for additional pollinator species packages.</p>	<p><b>Tame Forage:</b> 50/50 <i>- Additional annual \$20/acre payment for signing a five-year land-use agreement on tame plantings</i></p> <p><b>Native Forage:</b> 90/10</p>	<p>\$60,000 for Tame Forage stream</p> <p>\$30,000 for Native Forage stream</p>
<b>Targeted Grazing</b>	<p>Grazing service fees for contracting a small ruminant grazier.</p> <p>Costs associated with managing the targeted grazing project when the applicant owns the small ruminants.</p>	<p>50% of contract costs up to \$40/acre (for contracted grazing)</p> <p>\$30/acre for producers grazing their own small ruminants</p>	<p>\$50,000 funding CAP</p>



# Resilient Agricultural Landscapes Program

## Grazing Management BMPs

BMP	Eligible Activities	Cost-share	Funding Cap
<b>Native and Riparian Grazing Management</b>	Costs of cross-fencing as specified by a ministry specialist.  Remote livestock watering systems (solar or wind powered) for riparian areas, or components of these systems.	60/40	\$20,000 for Native Rangeland  \$20,000 for Riparian
<b>Rangeland Health Assessment</b>	Costs to hire a private agrologist to develop a rangeland health assessment and associated grazing management plan.	50/50	\$ 10,000

# Resilient Agricultural Landscapes Program

## Livestock Stewardship BMPs

BMP	Eligible Activities	Cost-share (Government/Applicant)	Funding Cap
<b>Livestock Water Protection</b>	Run-off control works on new or existing livestock, confinement, winter feeding or sorting and handling sites.	90/10	\$20,000
<b>Intensive Livestock Management</b>	Relocation of livestock confinement facilities, manure storage enhancements, run-off control, carcass disposal planning.	70/30	\$200,000
	Storage sheds and processing equipment	30/70	
<b>Extensive Wintering Site Management</b>	Relocating or purchasing infrastructure for winter feeding (portable windbreaks, fencing, water infrastructure, earthwork, power installation).  Construction or replacement of load-out facilities.	60/40	\$50,000
<b>Sulphate Water Treatment</b>	Reverse osmosis systems or other emerging water treatment technologies.	50/50	\$20,000
	Holding/evaporation ponds.	75/25	

# Animal Health and Biosecurity Producer Program



## Program Purpose:

- Provide rebates to producers to enhance producer-level participation in initiatives to support biosecurity, animal welfare and on-farm food safety.

## Program Information/Enhancements:

- Formerly named the Assurance System Producer Program.
- Veterinary assessments will be voluntary. A signature will be required from the veterinary clinic confirming the applicant has a current Veterinary-Client-Patient-Relationship.
- The maximum funding caps on individual eligible equipment will be removed for all livestock streams. Overall funding caps still apply.
- The funding cap for livestock sectors who must meet the standard \$50,000 gross farm income requirement will remain at \$15,000.
- For smaller livestock sectors who are only required to meet a \$15,000 gross farm income threshold, the funding cap for equipment will be \$5,000.
- The cost-share will continue to be a 50/50.



# Irrigation Development and Efficiency Program



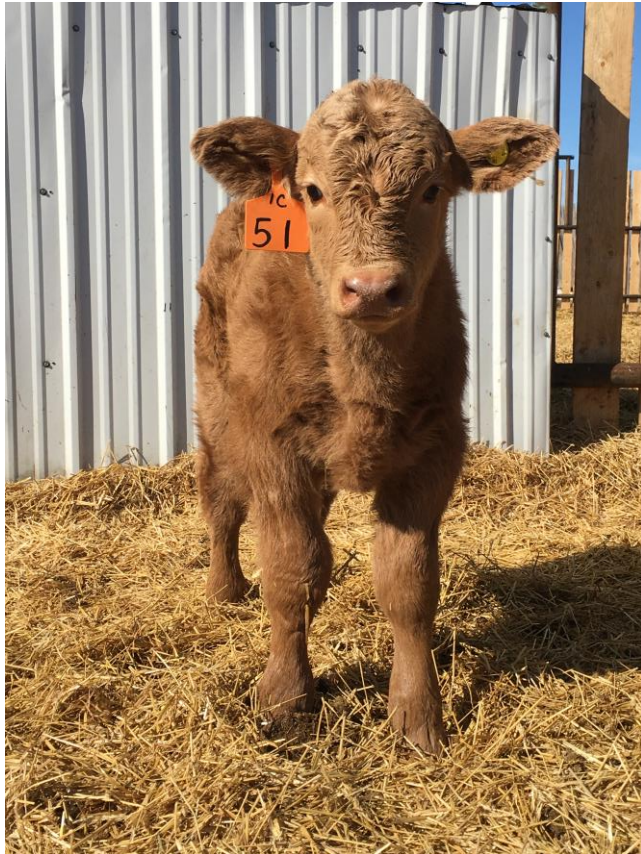
## Development

- Supports infrastructure development to increase irrigation capacity by creating water supply to irrigable land parcels.
- Irrigation districts and non-district developers can receive the lesser of 67 per cent of eligible development costs or \$1,675 per acre (previously was \$1,320 per acre), to a maximum of \$500,000 per eligible applicant.

## Efficiency

- Support for producers to convert low efficiency or high-pressure irrigation systems to high efficiency, low pressure systems.
- Eligibility has been expanded to include underground (subsurface) irrigation.
- Eligible applicants may receive up to 30 per cent of eligible costs to a maximum of \$50,000.

# Disease Surveillance Program



## Program Purpose:

- The Rabies Response Program provides funding for the protection of public and domestic animal health through the surveillance, investigation and control of suspected rabies cases.
- Other Disease Surveillance initiatives aim to improve knowledge of the diseases currently present in our livestock populations, provide tools to help producers control diseases, and improve and protect the health of Saskatchewan's livestock populations.

## Program Information:

- Continue with the rabies, antimicrobial resistance and disease surveillance for:
  - Anthrax;
  - Porcine Epidemic Diarrhea;
  - Swine Influenza;
  - Antimicrobial Resistance;
  - Johne's Disease in cattle;
  - Bovine Viral Diarrhea;
  - Diseases of wildlife impacting livestock including rabies, avian influenza and chronic wasting disease; and
  - Maedi Visna.
- Continue the Black Fly Program.

# Pest Biosecurity Program

## Program Purpose:

- Supports the control of persistent and problematic weeds, rat population, nuisance beaver populations and for the support, education and training to manage agriculture crop pests and noxious/prohibited weeds.

## Program Enhancements:

- Continued support for Plant Health Technical Advisors.
- Increased funding for the Rat Control Program.
- Continue to fund Beaver Control Program.
- **\*New\*** Gopher Control Program.
- Invasive Plant Control Program – continue to support an integrated approach to invasive and noxious weeds through collaboration with RMs, Crown land, reserve land and private land.
- Continued funding to Saskatchewan Crop Insurance for feral pig control (wild boar).

# Public Trust Programming

## Program Purpose:

- Focus on building awareness and trust in modern agriculture, encouraging industry to tell their story and improving connection to young leaders and new entrants into agriculture.
- Continued funding to Farm and Food Care Saskatchewan, 4H and Ag in the Classroom.

## Program Information:

- Continue funding farm safety activities;
- Ag Awareness Initiative Program;
  - Raise cost share from 50/50 to 75/25.
  - Allow for \$50,000 maximum per applicant/year from \$25,000 per project to a maximum of \$50,000/year.
- Next Gen Ag Mentorship Program; and
- Agriculture Student Scholarship.



# **\*New\* Livestock Facility Emissions Program**

## **Program Purpose:**

- To improve the hog sector's environmental performance, adaptation to climate change and reduction of Greenhouse Gas Emissions. The program will incentivize the adoption of best practices and technologies to improve environmental outcomes.

## **Program Information:**

- Eligibility is for practices and technologies to reduce emissions for intensive hog operations (installation costs included).
- Eligibility is for existing facilities.
- The program will fund maximum eligible costs of \$60 per animal unit, with maximum funding of \$500,000 per applicant.
- Activities to be cost-shared at 60/40 (government/applicant).

## Details and Contact Information

- Sustainable CAP webpage went live at **Saskatchewan.ca** on April 1<sup>st</sup>.
- Detailed program information is available on the website.
- If you have questions, you can contact the Agriculture Knowledge Centre at **1-866-457-2377**.





**Questions?**

